

ABOUT OTM-PROJECTADVIES

OTM stands for Measuring, Drawing and Making. Our expertise and experience lies in the design and manufacture of customized solutions. Our (variable) cable clamps are a good example of this. In the market of network companies (telecom and energy) our cable clamps have become a household name, where they are called the OTM clamps.

Engineering runs through our blood. Decades of experience are preceded by our motivation to work for you. We provide services such as advising, designing and delivering in metalworking, injection moulding, and machining. In addition, we offer solutions with regard to burglary protection that meet the highest quality standards.

OTM is a member of the Metal Union and acts accordingly to their terms and conditions. In addition we are also a member of Dutch Power and also actively involved in Corporate Social Responsibility (CSR).

Notes:



Opmeten | Teken en | Maken

OTM-PROJECTADVIES



OUR TEAM

At our office in Westervoort we work enthusiastically on the (further) development of our (new) products and strive to provide an optimal customer experience. Our organization has an open culture with a lot of freedom in how you do your work. After all, the result counts.

Our motto is: 'Individualism does not exist. Together we make a difference.'

During the year we invest in the training of new professionals and the team is often supplemented with motivated future talents.



OTM-PROJECTADVIES

Industrial park
Het Ambacht
Mollewitte 26
NL - 6931 KG Westervoort

T : +31(0)85 301 5447
F : +31(0)85 301 5474
E : info@otm-projectadvies.nl
W : www.otm-projectadvies.nl

Monday to Friday
8:30 AM - 4:00 PM

A SELECTION FROM OUR CUSTOMER BASE:

ENGINEERING | CABLE CLAMPS | BURGLARY PROTECTION



Ron Warbroek

- Owner
- Product developer & consultant



Dana Warbroek

- Communication
- Coaching



Frank Warbroek

- Budgeting



Paul de Bont

- IT manager
- Team support



“For every technical problem there is a solution”



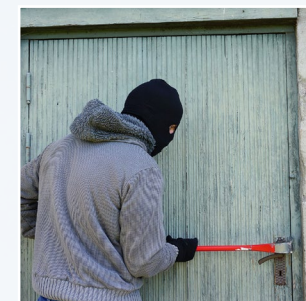
ENGINEERING

We design and manufacture high quality customized solutions for our customers. We support our customers from engineering to installation and/or delivery in the areas of machining, construction, injection moulding and custom designed OTM products. Our customers get all the exclusive attention from design to delivery.



OTM CABLE CLAMPS

The cable clamps are maintenance-free, corrosion-resistant, flame-retardant, weather- and UV-resistant. The A2 304 consists of a stainless steel clamping bracket and bolt and is suitable for normal conditions. For highly aggressive environmental conditions, such as a maritime climate, the cable clamps are also available in stainless steel A4 316.



BURGLARY PROTECTION

OTM offers various products in the field of burglary protection such as mechanical and electric locks with the option of multi-point locks.

Machining



Art.nr: DV1025

Brass Adhesive Anchor



Art.nr: DV1027

Stainless Steel Adapter



Art.nr: DV1022

Stainless Steel Prism Holder With Magnetic Base

Construction

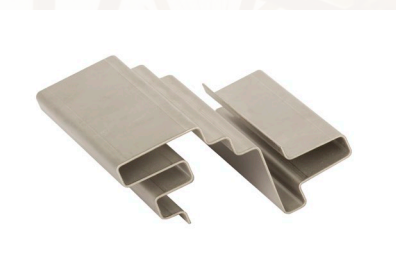


Art.nr: DV1023

Train Track Alignment



Sample Tubes



Stainless Steel Sheet Metal Examples

Injection Moulding



Medicine Container



Flame Retardant Paddings



Plastic Cable Splitter

OTM energy cable clamps and accessories



Variable Cable Clamp



Variable Cable Clamp



Variable Cable Clamp



Art.nr: KD1012
Brass Earth clamp Nickel Plated



Brass Connector e.g. For Smart Meter



Cable Connector



Stainless Steel Cable Bracket



Art.nr: KD1013
Stainless Steel Ground Terminal

OTM telecom cable clamps and accessories



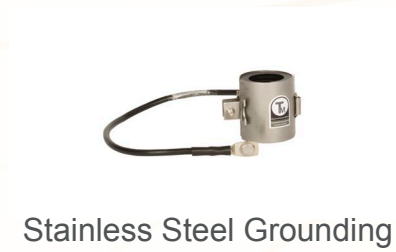
Telecom Cable Clamp



Telecom Cable Clamp



Telecom Cable Clamp



Stainless Steel Grounding Cable



Adjustable Stainless Steel Pole Clamp



Universal Stainless Steel Adapter

Locks



Safety multipoint locks



Padlock e.g. 17mm profile cylinder



Day and night lock with panic function

Key safes and accessories



Art.nr: SK1016

Stainless Steel Multi-Safe



Art.nr: SK1019

Stainless Steel Wall Safe Ø 88mm



Art.nr: SK1018

Stainless Steel Wall Safe Ø 48mm



Art.nr: SK1020

Stainless Steel Padlock Key Safe



Art.nr: SK1021

Stainless Steel Double Hanger



Art.nr: SK1032

MasterLock 5441 Bluetooth Key Safe